

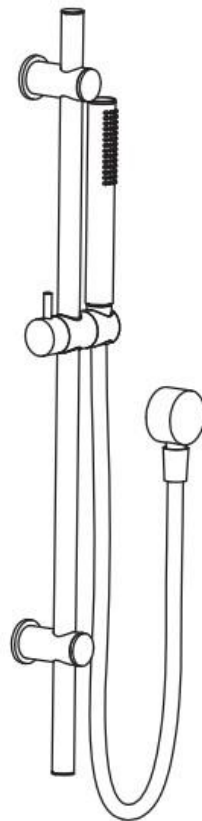
# USER MANUAL



Thank you for choosing Better Bathrooms.  
Please read this manual before installing your product  
and keep for future reference.

**better**   
**bathrooms**

## Vance Slide Rail Kit with Outlet Elbow Brushed Gold BeBa\_28245



- **Single-person assembly**
- **Tools required**
- **We always recommend using professional tradespeople to install your product**

# Congratulations on your purchase

*And welcome to our growing gang of savvy shoppers*

We're on a mission to bring you extraordinary bathroom products, for less. From modern to traditional style ceramics, plus the gorgeous fixtures, fittings and furniture to match. So, you can fall in love with your space every single day.

As one of the UK's largest independent bathroom stores, we've received countless awards; including the National Business Awards UK, the Digital Entrepreneur Awards and being placed on The Sunday Times Fast Track 100.

We hope your new product goes above and beyond your expectations. However, should any problems occur, please:

- log in to your account and contact our customer services team via your self-serve portal – [betterbathrooms.com/CustomerAccount/Login](https://betterbathrooms.com/CustomerAccount/Login)
- contact us via [betterbathrooms.com/content/contact-us](https://betterbathrooms.com/content/contact-us)

## Important information

- Please read these instructions thoroughly and retain for future reference

1.To avoid scratches and damage to kit surfaces, wear protective gloves when assembling/ installing the system.

2.Prior to installation, check the product for transport damage. Damage, even though it will not be visible,can significantly affect system performance after the installation.

3.Check wall for cables and pipes before drilling.

4.Operation, to move the slider, you must always twist the lever before sliding.

5. Technical Specifications:

Operating Pressure:

Min: 100kPa/1.0bar

Max: 500kPa/5.0bar

Optimum: 100kPa/1.0bar - 500kPa/5bar

Recommended installation of pressure limiting valve if supply exceeds 500kPa

Operating Temperature:

Hot: Max 80°C

Cold: Min 5°C

Hot and Cold Pressures must be balanced

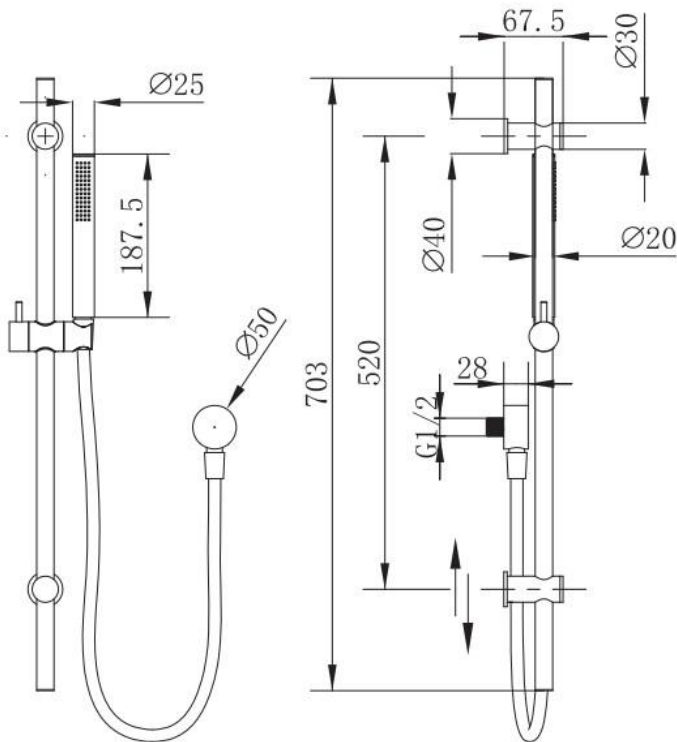
Inlet Connections:

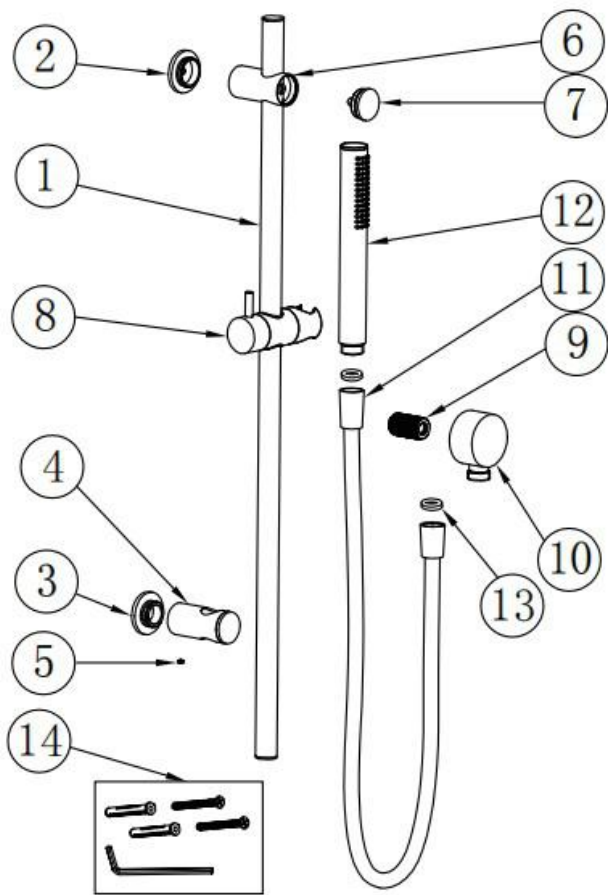
All G $\frac{1}{2}$ "

NOTE:

- After installation all connections must be checked for leaks.
- All installations must be carried out in compliance with relevant water regulations.

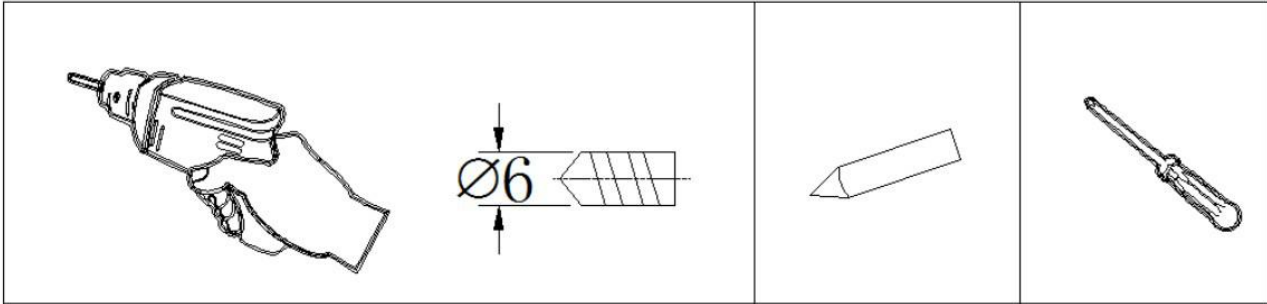
## Parts / Diagrams





14	ASBQ0046-XX	Spare parts	1	
13	AR-RB006CP-08	Seal	1	
12	AS-HRB023CP	Hand shower	1	
11	ASBP0032-XX	Hose	1	
10	AP-RB002CP	elbow	1	
9	PTRR0070-XX	connector	1	
8	ASBC0333-P1	Shower holder	1	
7	AR-RB006CP-07	Cover	1	
6	AR-RB006CP-06	Wall bracket 1	1	
5	AR-RB006CP-05	screw	1	
4	AR-RB006CP-04	Wall bracket 2	1	
3	AR-RB006CP-03	Fixed base 2	4	
2	AR-RB006CP-02	Fixed base 1	1	
1	AR-RB006CP-01	Rail	1	
NO.	Part NO.	Part Name	QTY	Remark

# Tools required



Electric Drill

Pen

Screwdriver

# Installation

<p>1.</p> <p>1850MM(Recommended) 570-520MM(Recommended) Floor</p> <p>Drill 2 holes (Distance is 570-520mm) in desired position.</p>	<p>2.</p> <p>Fixed base 1 can be rotating. Fixed base 1 Fixed base 2</p> <p>Insert the wall plugs. Secure the two Fixed Bases to the wall, using the screws provided. Please note do not fully tighten Fixed Base 1 (top bracket) at this point as it needs to rotate to allow it to screw to the rail bracket.</p>	<p>3.</p> <p>Lock the the Fixed base 1 with the wall bracket 1. Cover</p> <p>Remove the caps from the rail brackets. Place the top rail bracket onto the rail and align it with the hole in the rail. Place the bottom rail bracket onto the rail. Push the top bracket onto the Fixed Base 1 and rotate the Fixed base until tight.</p>
<p>4.</p> <p>Tighten the Cover to the Rail.</p> <p>Then from inside the rail bracket tighten the wall screw fully. Insert the cap into bracket so that the peg pushes into the hole in the rail. Place the bottom bracket over the Fixed base 2 and secure using the grub screw provided.</p>	<p>5.</p> <p>PTFE thread seal tape (Not supplied) outlet hole</p> <p>1. Wrap PTFE thread seal tape around the inlet connector. The outlet should be connected to a suitable wall water fitting not supplied. 2. Tighten the elbow.</p>	<p>6.</p> <p>Fit the cone end of the hose to the hand shower and elbow. Check seals are be fitted to both ends of the hose.</p>

To move the hand shower on the rail always release the lever on the slider bracket, never slide without doing this as it will cause the slider to fail.

# Maintenance and Cleaning

To clean all surface, use only a soft cloth(microfiber) and mild detergents (like soap) and then rinse thoroughly with clean water and dry with a soft cloth. Remove lime deposits using a mild dishwasher liquid.No abrasive chemicals or materials can be used on the product.

Regularly (at least once a quarter) clean, rinse and check the system, and if your water type differs from the standard parameters(such as pressure and hardness), adjust the frequency to the prevailing conditions, bearing in mind that the use of system under non-standard conditions decreases its useful life and the lack of maintenance and care drastically reduces it.

## ***For more information***

- visit [betterbathrooms.com](http://betterbathrooms.com)
- email [customerservices@buyitdirect.co.uk](mailto:customerservices@buyitdirect.co.uk)
- call 0330 390 3062
- write to Trident Business Park, Neptune Way, Huddersfield, HD2 1UA

**better**   
**bathrooms**

Part of the BuyItDirect Group